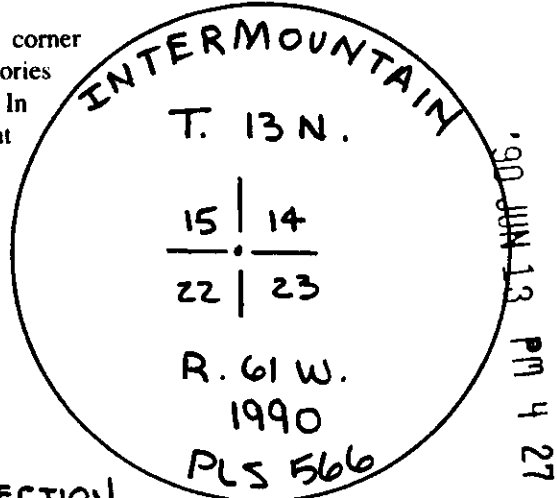


Wyoming Certified Land Corner Recordation Certificate

This form is to be completed in accordance with W.S. 36-11-101, printed in black ink or typed, and shall be for one individual corner.

Describe below, or show in sketch attached to this form, the corner evidence found. Include condition and type of monument, accessories and ties. Describe any maintenance or rehabilitation performed. In the circle to the right, show monument inscription. If monument is determined lost or obliterated, restate the GLO or BLM original field note record; describe or show the procedure used to reestablish the corner and all data as above for a found monument.



RECEIVED
 LARAMIE COUNTY
 CHEYENNE, WY.
 C71301

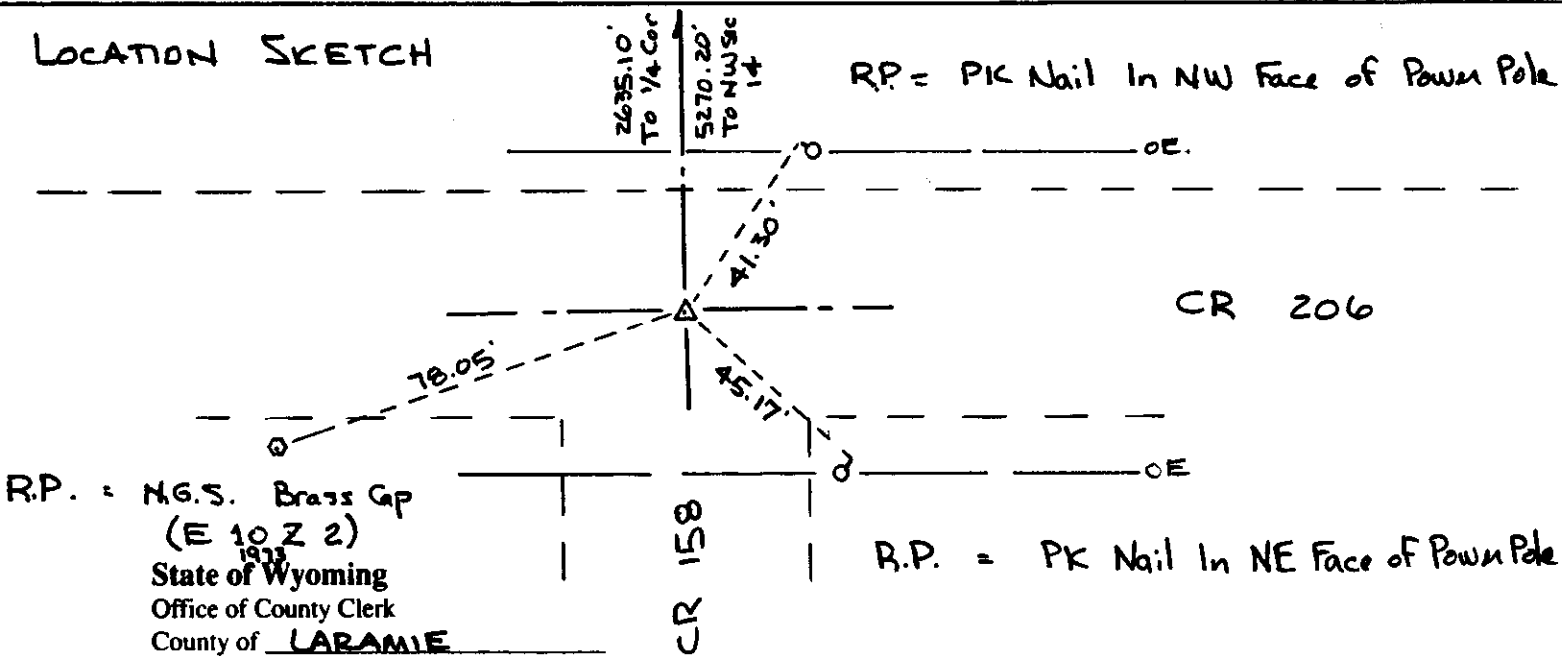
Field Date 5/10/90 Office Reference #2035

EVIDENCE FOUND - # 5 REBAR
 24" LONG (NO RECORD) - FALLS IN
 CENTER OF COUNTY ROAD INTERSECTION
 CHECKED DISTANCE TO CORNER 1 MILE N Mon Monument Inscription
 ACCEPTED REBAR FOR CORNER LOCATION
 GLO RECORD - LIMESTONE 18" x 12" x 8"

MONUMENT SET - 3" ALUM. CAP. STAMPED AS SHOWN. SET ON
 3/4" x 3/4" ALUM. ROD. - SET 1 FOOT BELOW ROAD SURFACE.

REFERENCE POINTS - P.K. NAILS IN POWER POLES TO NE & SE
 AS SHOWN. MEASURED TO EXISTING NGS "HORIZONTAL
 CONTROL MARKER" (E. 10. Z. 2 - 1973.) TO SW.

LOCATION SKETCH



This Certified Land Corner Recordation Certificate was filed for record on the ____ day of _____, 19 ____, in Book No. T 13 N, R 61 W, on Alpha-Numeric coordinates N-17 and was noted on the Cross Index Plat.

County Clerk

Corner Type: Aliquot Corner Other
 Section(s) 15 | 14 / 22 | 23 Meridian 6TH P.M.
 Corner Name SECTION COR Township 13 N. Range 61 W Page ____

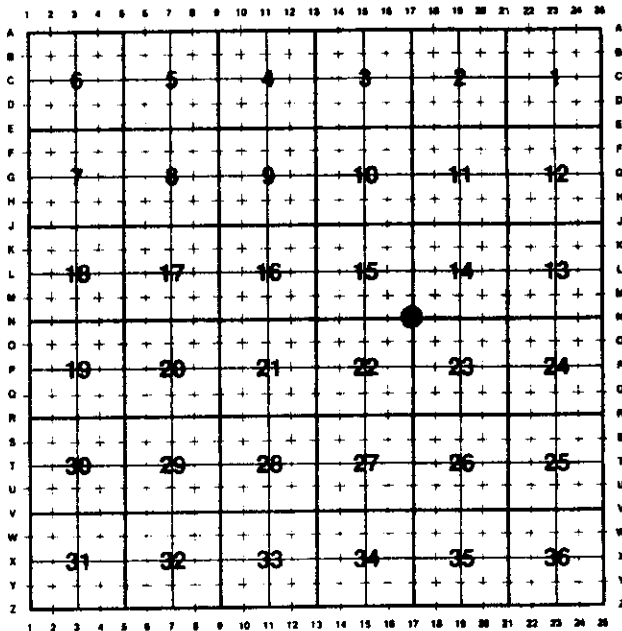
Sheet ____ of ____

**Directions for using the
Cross Index Plat**

Section, quarter and sixteenth corners will be marked with a dot at the corner location. The alpha-numeric coordinate number is then determined for the intersection of the two lines. A corner that applies to two or more townships shall be filed under all that apply by the use of photo copies.

Closing corners will be indexed under the township in which they control ownership. For 1/64, 1/256, 1/1024 and non-aliquot corners lying between grid designations, mark the appropriate grid area with a dot and use the index code to the north and west (local systems may be used if the method is approved by the County Surveyor or Clerk and a written description of its use is filed in the front of each book of certificates).

Cross Index Plat



State Plane Coordinates (optional)

Zone W WC EC E feet/meters

NAD 1927 NGVD 1929 NAD 1983 NAVD 1988

North (Y) = _____ East (X) = _____ EL = _____

Latitude _____ Longitude _____

Scale Factor _____ Geoid Height _____

Certification

I, WILLIAM D. BRAMAN, Wyoming PLS-~~PK~~ 566 certify that I, or others under my supervision, have performed the work as described above and completed this form.

Company or Agency INTERMOUNTAIN PROFESSIONAL SERVICES, INC.

Mailing Address 1816 CENTRAL AVENUE

Street Address " "

City, State, ZIP CHEYENNE, WYOMING 82001

Telephone, FAX PH (307) 632-338 FAX (307) 632-3194

Sheet _____ of _____

